

Vinyl Bead Accessories for Stucco and Plaster, Continuous Insulation (CI) and Thin Veneer Stone Installations

Project Submittals as manufactured by

Submittal Date:

Contract Number:

Project Name:

Section Number:

Name of Contractor:

All information contained herein is accurate as known at the time of publication. Specifications may change and AMICO reserves the right to change product specifications without notice and without incurring obligations.

ALABAMA METAL INDUSTRIES CORPORATION

3245 Fayette Avenue ♦ Birmingham, AL 35208 ♦ Telephone 800/366-2642

Facsimile 205/786-6527



Lathing Accessories for rigid poly (vinyl chloride) (PVC) compounds meeting ASTM C841 and C1861

SCOPE

This submittal covers vinyl accessories installed with interior and exterior Portland Cement-Based Plaster. All vinyl accessories shall have perforated flanges to permit complete embedment in the plaster, to provide for accurate alignment, and to secure attachment of the accessory to the underlying surface in receiving the specified thickness of finish. The selection of the accessory shall be determined by numerous factors not limited to: the project location, climate and environment resulting from excessive salt, moisture, humidity, pollution, wear and temperature changes.

TYPES OF ACCESSORIES

Submittal includes the following types of accessories used for stucco applications: corner beads, casing beads, expansion joints, control joints, weep screeds, reveals, soffit vents and miscellaneous components.

MATERIALS

Rigid Poly (Vinyl Chloride) (PVC) compounds meeting ASTM 4216 for exterior applications
ASTM 1784 for interior applications

THICKNESS OF BASE MATERIALS

These minimum thicknesses meet both ASTM C841 and ASTM C1861.

FINISH

PVC shall be mill finish and shall be compatible with standard lathing and paint finishes. Selected profiles come in colors.

COLORS

Standard color is white. Foundation Weep Screed can be specified and ordered with the exposed area in white, tan, brown or gray.



COMBUSTIBILITY / FIRE RESISTANCE

Rigid vinyl components are self extinguishing, and do not support combustion once the flame source is removed. Therefore rigid vinyl will not cause, re-ignite or spread a fire.

PACKAGING AND PACKAGE MARKING

Standard length of an AMICO accessory is 10-ft long. Other length by product are offered. Longest possible lengths shall always be installed to avoid joints. Each factory box shall be marked with manufacturer's name, style of accessory and country of origin.

CERTIFICATION

When required a certification that products meets the requirements of ASTM C1861 and ASTM C841 shall be provided.

REFERENCES

AMICO VINYL ACCESSORIES FOR LATHING MEET THE FOLLOWING STANDARDS

ASTM C1861 Standard Specification for Installation of Lathing and Furring Accessories and Fasteners, Interior and Exterior Portland Cement-Based Plaster

ASTM C841 Standard Specification for Installation of Interior Lathing and Furring

ASTM D1784 Standard Specification for Rigid Poly(Vinyl Chloride) (PVC) Compounds and Chlorinated Poly(Vinyl Chloride) (CPVC) Compounds

ASTM D4216 Standard Specification for Rigid Poly(Vinyl Chloride) (PVC) and Related PVC and Chlorinated Poly(Vinyl Chloride) (CPVC) Building Products Compounds.

CODE ACCEPTANCE

Meets IBC 2510 and IBC 2511

Meets Buy American Procurement Requirements.

Made in the United States of America

LEED: 100% post industrial recyclable content

All butt joints, intersections, and ends should be joined, embedded and sealed in a quality sealant compatible with exterior paint finish.

All information contained herein is accurate as known at the time of publication. Specifications may change and AMICO reserves the right to change product specifications without notice and without incurring obligations.

ALABAMA METAL INDUSTRIES CORPORATION

3245 Fayette Avenue ♦ Birmingham, AL 35208 ♦ Telephone 800/366-2642

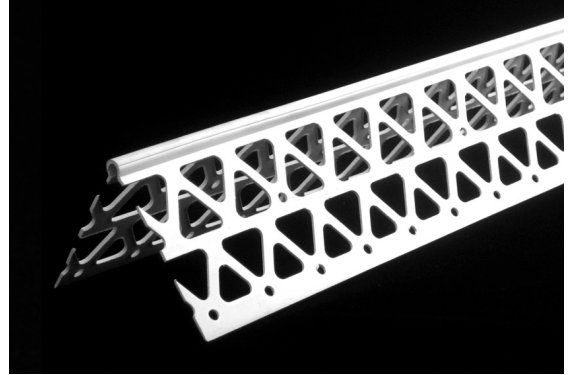
Facsimile 205/786-6527



VINYL CORNER BEAD Regular Equal Length Leg

FOR STUCCO AND PLASTER INSTALLATIONS
AMICO Vinyl Corner Bead reinforces exterior stucco corners with durable, straight, and rust free vinyl corners.

The addition of stiffener ribs and slotted nailing holes makes these products easy and quick to install level and straight.

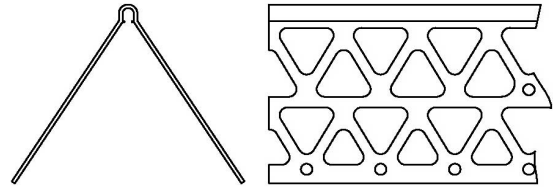


AMX1 2½" Leg Corner Bead

Product Submittal	Product Number	Dimensions
	AMX1	2½" x 2½"
	AMX2	2¾" x 2¾"
Standard Length is 10-Feet		

FINISH

The finish on all AMICO vinyl stucco accessories is compatible with standard lathing and paint finishes.



Vinyl Equal Leg Corner Bead

REFERENCES

PVC complies with ASTM D4316 and ASTM D1784
Meets IBC 2510 and IBC 2511
Refer to ASTM C1063 for support spacing, lath selection, fastener selection and further information regarding the proper installation of metal lath and accessories.
Meets Buy American Procurement Requirements
Made in the United States of America
LEED: 100% post industrial recyclable content

All butt joints, intersections, and ends should be joined, embedded and sealed in a quality sealant compatible with exterior paint finish.

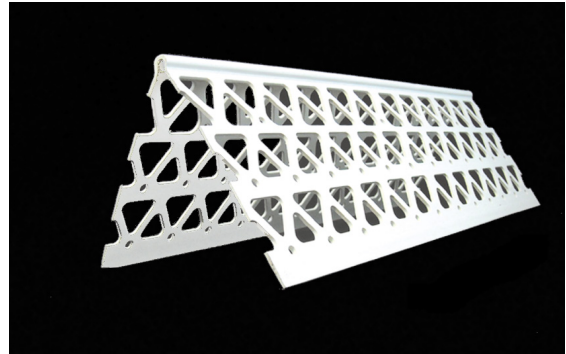
All information contained herein is accurate as known at the time of publication. Specifications may change and AMICO reserves the right to change product specifications without notice and without incurring obligations.

ALABAMA METAL INDUSTRIES CORPORATION
3245 Fayette Avenue ♦ Birmingham, AL 35208 ♦ Telephone 800/366-2642
Facsimile 205/786-6527

VINYL CORNER BEAD Regular Equal Length Leg

FOR STUCCO AND PLASTER INSTALLATIONS
AMICO Vinyl Corner Bead reinforces exterior stucco corners with durable, straight, and rust free vinyl corners.

The addition of stiffener ribs and slotted nailing holes makes these products easy and quick to install level and straight.



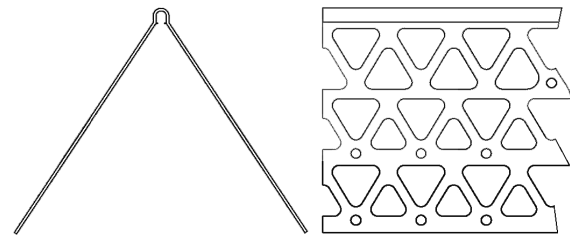
Product Submittal	Product Number	Dimensions
	AMX1-WF	4" x 4"
Standard Length is 10-Feet		

FINISH

The finish on all AMICO vinyl stucco accessories is compatible with standard lathing and paint finishes.

REFERENCES

PVC complies with ASTM D4316 and ASTM D1784
Meets IBC 2510 and IBC 2511
Refer to ASTM C1063 for support spacing, lath selection, fastener selection and further information regarding the proper installation of metal lath and accessories.
Meets Buy American Procurement Requirements
Made in the United States of America
LEED: 100% post industrial recyclable content



AMX1-WF 4" Leg Corner Bead

All butt joints, intersections, and ends should be joined, embedded and sealed in a quality sealant compatible with exterior paint finish.

All information contained herein is accurate as known at the time of publication. Specifications may change and AMICO reserves the right to change product specifications without notice and without incurring obligations.

ALABAMA METAL INDUSTRIES CORPORATION

3245 Fayette Avenue ♦ Birmingham, AL 35208 ♦ Telephone 800/366-2642
Facsimile 205/786-6527

VINYL CORNER BEAD Irregular Length Leg

FOR STUCCO AND PLASTER INSTALLATIONS
AMICO Vinyl Corner Bead reinforces exterior stucco corners with durable, straight, and rust free vinyl corners.

The addition of stiffener ribs and slotted nailing holes makes these products easy and quick to install level and straight.

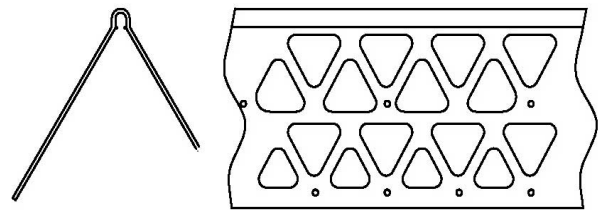
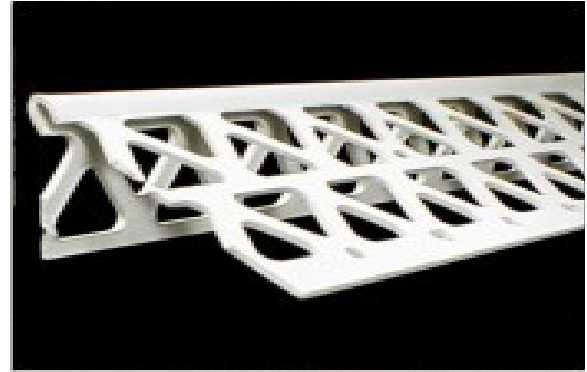
Product Submittal	Product Number	Dimensions	Leg "A"	Leg "B"
	AMX1-IR	2½" x 1½"	2½"	1½"
Standard Length is 10-Feet				

FINISH

The finish on all AMICO vinyl stucco accessories is compatible with standard lathing and paint finishes.

REFERENCES

PVC complies with ASTM D4316 and ASTM D1784
Meets IBC 2510 and IBC 2511
Refer to ASTM C1063 for support spacing, lath selection, fastener selection and further information regarding the proper installation of metal lath and accessories.
Meets Buy American Procurement Requirements
Made in the United States of America
LEED: 100% post industrial recyclable content



Vinyl irregular Length Leg Corner Bead

All butt joints, intersections, and ends should be joined, embedded and sealed in a quality sealant compatible with exterior paint finish.

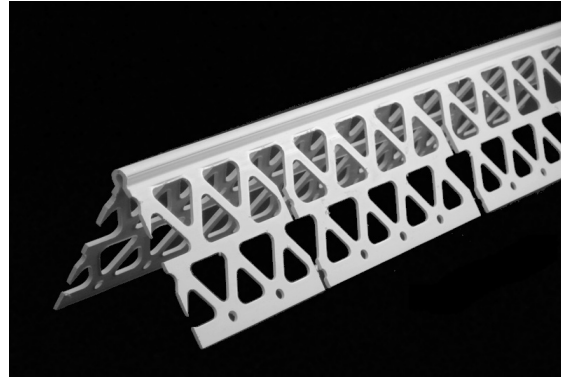
All information contained herein is accurate as known at the time of publication. Specifications may change and AMICO reserves the right to change product specifications without notice and without incurring obligations.

ALABAMA METAL INDUSTRIES CORPORATION
3245 Fayette Avenue ♦ Birmingham, AL 35208 ♦ Telephone 800/366-2642
Facsimile 205/786-6527

VINYL ARCHED CORNER BEAD

FOR STUCCO AND PLASTER INSTALLATIONS
AMICO Vinyl Arched Corner Bead reinforces exterior stucco edges. It is supplied pre-notched to curve to most construction radiuses.

Product Submittal	Product Number	Dimensions
	AMX1-Arch	2½" x 2½"
Standard Length is 10-Feet		

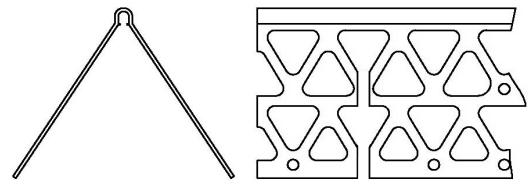


FINISH

The finish on all AMICO vinyl stucco accessories is compatible with standard lathing and paint finishes.

REFERENCES

PVC complies with ASTM D4316 and ASTM D1784
Meets IBC 2510 and IBC 2511
Refer to ASTM C1063 for support spacing, lath selection, fastener selection and further information regarding the proper installation of metal lath and accessories.
Meets Buy American Procurement Requirements
Made in the United States of America
LEED: 100% post industrial recyclable content



Vinyl Arched Corner Bead

All butt joints, intersections, and ends should be joined, embedded and sealed in a quality sealant compatible with exterior paint finish.

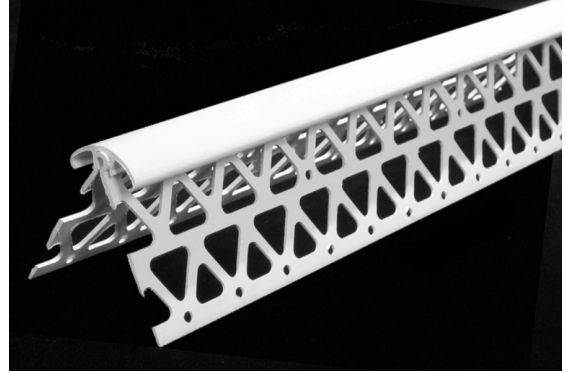
All information contained herein is accurate as known at the time of publication. Specifications may change and AMICO reserves the right to change product specifications without notice and without incurring obligations.

ALABAMA METAL INDUSTRIES CORPORATION

3245 Fayette Avenue ♦ Birmingham, AL 35208 ♦ Telephone 800/366-2642
Facsimile 205/786-6527

VINYL BULL NOSE CORNER BEAD

FOR STUCCO AND PLASTER INSTALLATIONS
AMICO Vinyl Bull Nose Corner Bead provides a 3/4-inch radius with similar damage resistant qualities as that of metal bull nose corner bead. This bull nose bead is a compliment to our other stucco bull nose reveals and bull nose casing beads.



Vinyl Bull Nose Corner Bead

Product Submittal	Product Number	Dimensions	Leg "A"	Leg "B"
	AMX1-BN	2½" x 2½"	2½"	2½"
Standard Length is 10-Feet				

FINISH

The finish on all AMICO vinyl stucco accessories is compatible with standard lathing and paint finishes.

REFERENCES

PVC complies with ASTM D4316 and ASTM D1784
Meets IBC 2510 and IBC 2511
Refer to ASTM C1063 for support spacing, lath selection, fastener selection and further information regarding the proper installation of metal lath and accessories.
Meets Buy American Procurement Requirements
Made in the United States of America
LEED: 100% post industrial recyclable content

All butt joints, intersections, and ends should be joined, embedded and sealed in a quality sealant compatible with exterior paint finish.

All information contained herein is accurate as known at the time of publication. Specifications may change and AMICO reserves the right to change product specifications without notice and without incurring obligations.

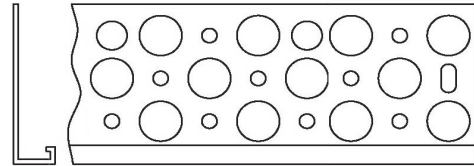
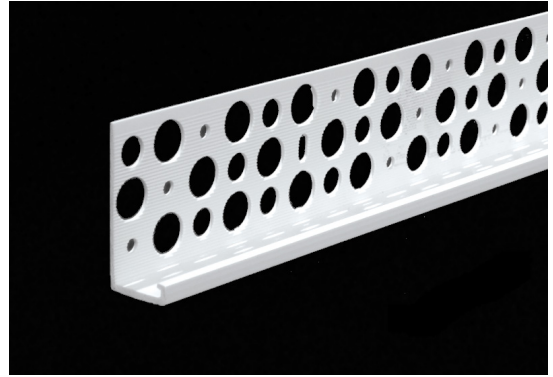
ALABAMA METAL INDUSTRIES CORPORATION
3245 Fayette Avenue ♦ Birmingham, AL 35208 ♦ Telephone 800/366-2642
Facsimile 205/786-6527

VINYL CASING BEAD

FOR STUCCO AND PLASTER INSTALLATIONS

AMICO Vinyl Casing Bead provides a durable termination for plaster or stucco.

Product Submittal	Product Number	Ground
	AM66-250	1/4"
	AM66-380	3/8"
	AM66-500	1/2"
	AM66-580	5/8"
	AM66-750	3/4"
	AM66-780	7/8"
	AM66-1000	1"
1 3/4" Wide Flange		
Standard Length is 10-Feet		



Vinyl Casing Bead

FINISH

The finish on all AMICO vinyl stucco accessories is compatible with standard lathing and paint finishes.

REFERENCES

PVC complies with ASTM D4316 and ASTM D1784

Meets IBC 2510 and IBC 2511

Refer to ASTM C1063 for support spacing, lath selection, fastener selection and further information regarding the proper installation of metal lath and accessories.

Meets Buy American Procurement Requirements

Made in the United States of America

LEED: 100% post industrial recyclable content

All butt joints, intersections, and ends should be joined, embedded and sealed in a quality sealant compatible with exterior paint finish.

All information contained herein is accurate as known at the time of publication. Specifications may change and AMICO reserves the right to change product specifications without notice and without incurring obligations.

ALABAMA METAL INDUSTRIES CORPORATION

3245 Fayette Avenue ♦ Birmingham, AL 35208 ♦ Telephone 800/366-2642

Facsimile 205/786-6527

VINYL DEEP GROUND CASING BEAD

FOR STUCCO AND PLASTER INSTALLATIONS
AMICO Vinyl Casing Bead provides a durable termination

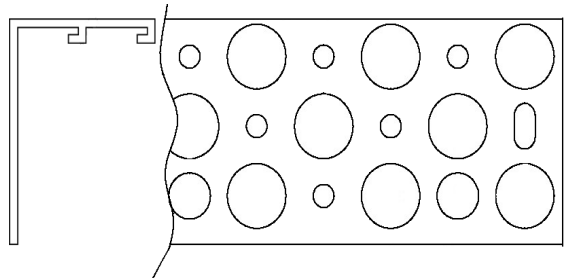
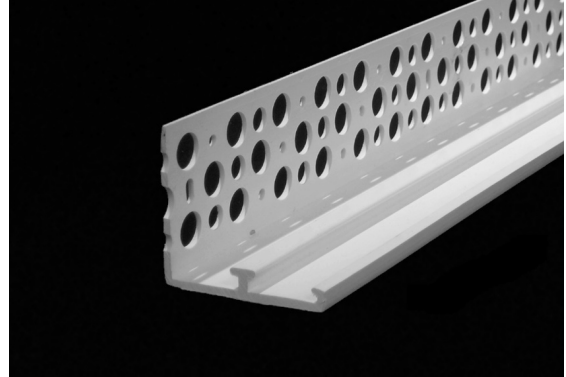
Product Submittal	Product Number	Ground
	AM66-1250	1¼"
	AM66-1500	1½"
1¾" Wide Flange		
Standard Length is 10-Feet		

FINISH

The finish on all AMICO vinyl stucco accessories is compatible with standard lathing and paint finishes.

REFERENCES

PVC complies with ASTM D4316 and ASTM D1784
Meets IBC 2510 and IBC 2511
Refer to ASTM C1063 for support spacing, lath selection, fastener selection and further information regarding the proper installation of metal lath and accessories.
Meets Buy American Procurement Requirements
Made in the United States of America
LEED: 100% post industrial recyclable content



Vinyl Deep Ground Casing Bead

Available with optional 1/8-inch weep holes
6-inches on center.

All butt joints, intersections, and ends should be joined, embedded and sealed in a quality sealant compatible with exterior paint finish.

All information contained herein is accurate as known at the time of publication. Specifications may change and AMICO reserves the right to change product specifications without notice and without incurring obligations.

ALABAMA METAL INDUSTRIES CORPORATION
3245 Fayette Avenue ♦ Birmingham, AL 35208 ♦ Telephone 800/366-2642
Facsimile 205/786-6527

VINYL SOLID WIDE FLANGE CASING BEAD

FOR STUCCO AND PLASTER INSTALLATIONS

AMICO Vinyl Solid Wide Flange Casing Bead is specified for installations at the head of a window as well at transitions from sloping roof lines and foundation lines. Supplied with holes are punched into the bottom of the ground .

Product Submittal	Product Number	Ground Description
	AM66-WFWC-500	1/2"
	AM66-WFWC-780	7/8"
3 1/2" Wide Flange		
Standard Length is 10-Feet		

FINISH

The finish on all AMICO vinyl stucco accessories is compatible with standard lathing and paint finishes.

REFERENCES

PVC complies with ASTM D4316 and ASTM D1784

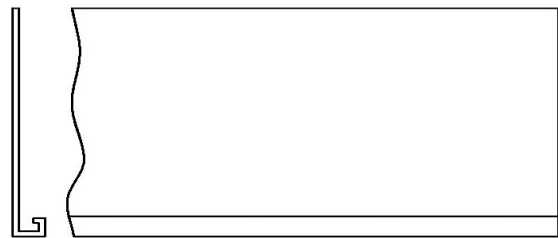
Meets IBC 2510 and IBC 2511

Refer to ASTM C1063 for support spacing, lath selection, fastener selection and further information regarding the proper installation of metal lath and accessories.

Meets Buy American Procurement Requirements

Made in the United States of America

LEED: 100% post industrial recyclable content



Vinyl Solid Wide Flange Casing Bead

All butt joints, intersections, and ends should be joined, embedded and sealed in a quality sealant compatible with exterior paint finish.

All information contained herein is accurate as known at the time of publication. Specifications may change and AMICO reserves the right to change product specifications without notice and without incurring obligations.

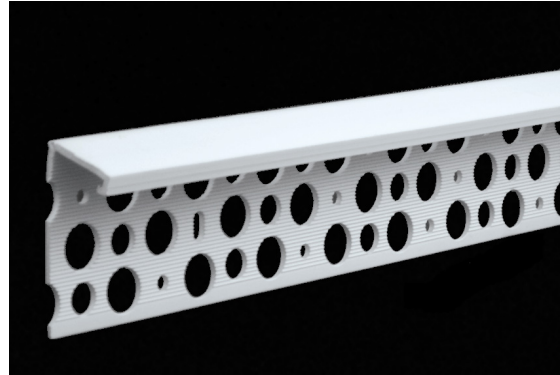
ALABAMA METAL INDUSTRIES CORPORATION

3245 Fayette Avenue ♦ Birmingham, AL 35208 ♦ Telephone 800/366-2642

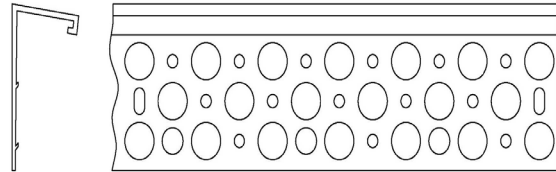
Facsimile 205/786-6527

VINYL ANGLED CASING BEAD

FOR STUCCO AND PLASTER INSTALLATIONS
AMICO Vinyl Angled Casing Bead is specified to form the top edge of a horizontal wall band. The 75-degree angled top edge permits any water to move away from the top edge of the wall and away from the building facade.



Product Submittal	Product Number	Ground Description
	AM66-Angled-500	1/2"
	AM66-Angled-580	5/8"
	AM66-Angled-750	3/4"
	AM66-Angled-1000	1"
	AM66-Angled-1250	1 1/4"
	AM66-Angled-1500	1 1/2"
	AM66-Angled-2000	2"
1 3/4" Wide Flange		
Standard Length is 10-Feet		



Vinyl Angled Casing Bead

FINISH

The finish on all AMICO vinyl stucco accessories is compatible with standard lathing and paint finishes.

REFERENCES

PVC complies with ASTM D4316 and ASTM D1784
Meets IBC 2510 and IBC 2511
Refer to ASTM C1063 for support spacing, lath selection, fastener selection and further information regarding the proper installation of metal lath and accessories.
Meets Buy American Procurement Requirements
Made in the United States of America
LEED: 100% post industrial recyclable content

All butt joints, intersections, and ends should be joined, embedded and sealed in a quality sealant compatible with exterior paint finish.

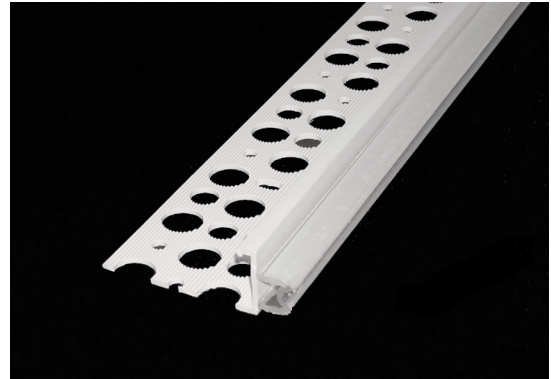
All information contained herein is accurate as known at the time of publication. Specifications may change and AMICO reserves the right to change product specifications without notice and without incurring obligations.

ALABAMA METAL INDUSTRIES CORPORATION
3245 Fayette Avenue ♦ Birmingham, AL 35208 ♦ Telephone 800/366-2642
Facsimile 205/786-6527

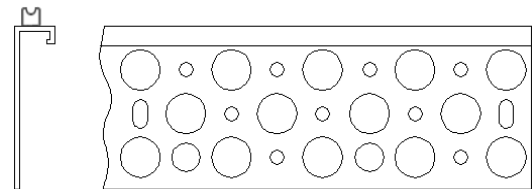
E-Z Bead™ VINYL CASING BEAD

FOR STUCCO AND PLASTER INSTALLATIONS

E-Z Bead is designed with a built-in flexible strip for a straight and uniform spacing around window and door frames or any other point where stucco meets a dissimilar material (e.g., soffits, fascia board, etc.) This flexible spacing strip is lined with a bond breaking tape that allows for two-sided adhesion, which eliminates the need for a backer rod.



Product Submittal	Product Number	Ground Description
	AM66-EZ-500	1/2"
	AM66-EZ-580	5/8"
	AM66-EZ-750	3/4"
	AM66-EZ-780	7/8"
	AM66-EZ-1500	1 1/2"
3/8" Flexible Backer Rod		
1 3/4" Wide Flange		
Standard Length is 10-Feet		



E-Z Bead Vinyl Casing Bead

FINISH

The finish on all AMICO vinyl stucco accessories is compatible with standard lathing and paint finishes.

REFERENCES

PVC complies with ASTM D4316 and ASTM D1784

Meets IBC 2510 and IBC 2511

Refer to ASTM C1063 for support spacing, lath selection, fastener selection and further information regarding the proper installation of metal lath and accessories.

Meets Buy American Procurement Requirements

Made in the United States of America

LEED: 100% post industrial recyclable content

All butt joints, intersections, and ends should be joined, embedded and sealed in a quality sealant compatible with exterior paint finish.

All information contained herein is accurate as known at the time of publication. Specifications may change and AMICO reserves the right to change product specifications without notice and without incurring obligations.

ALABAMA METAL INDUSTRIES CORPORATION

3245 Fayette Avenue ♦ Birmingham, AL 35208 ♦ Telephone 800/366-2642

Facsimile 205/786-6527

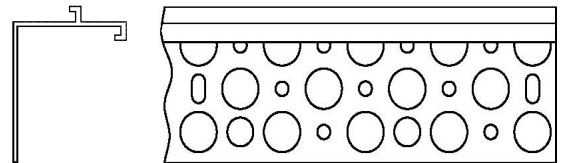
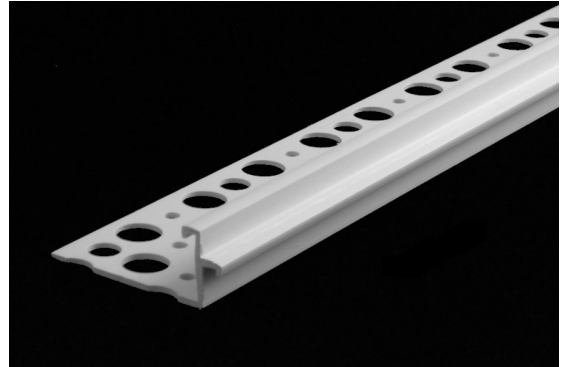
VINYL BANDING BEAD

Patent #D471991S

FOR STUCCO AND PLASTER INSTALLATIONS

AMICO Vinyl Banding Bead is a type of casing bead that allows for different shapes and sizes of bands be created in any orientation on horizontal and vertical surfaces. The bead's two grounds of different heights allows for the transition of stucco creating the band.

Product Submittal	Product Number	Ground Description
	AMBB-750-500	¾" & ½"
	AMBB-1000-500	1" & ½"
	AMBB-1500-500	1½" & ½"
	AMBB-1500-750	1½" & ¾"
1¾" Wide Flange		
Standard Length is 10-Feet		



Vinyl Bull Nose Casing Bead

FINISH

The finish on all AMICO vinyl stucco accessories is compatible with standard lathing and paint finishes.

REFERENCES

PVC complies with ASTM D4316 and ASTM D1784

Meets IBC 2510 and IBC 2511

Refer to ASTM C1063 for support spacing, lath selection, fastener selection and further information regarding the proper installation of metal lath and accessories.

Meets Buy American Procurement Requirements

Made in the United States of America

LEED: 100% post industrial recyclable content

All butt joints, intersections, and ends should be joined, embedded and sealed in a quality sealant compatible with exterior paint finish.

All information contained herein is accurate as known at the time of publication. Specifications may change and AMICO reserves the right to change product specifications without notice and without incurring obligations.

ALABAMA METAL INDUSTRIES CORPORATION

3245 Fayette Avenue ♦ Birmingham, AL 35208 ♦ Telephone 800/366-2642

Facsimile 205/786-6527

April 2021



VINYL M-TYPE CONTROL JOINT WITH REMOVABLE TAPE

FOR STUCCO AND PLASTER INSTALLATIONS

AMICO Vinyl M-Type Control Joint with optional removable tape is designed to relieve stress in the stucco membrane caused by typical stucco shrinkage and thermal movement

Product Submittal	Product Number	Ground Description
	AMCJM-380	3/8"
	AMCJM-500	1/2"
	AMCJM-580	5/8"
	AMCJM-750	3/4"
	AMCJM-780	7/8"
Each profile has an overall width of 4"		
Standard Length is 10-Feet		

FINISH

The finish on all AMICO vinyl stucco accessories is compatible with standard lathing and paint finishes.

REFERENCES

PVC complies with ASTM D4316 and ASTM D1784

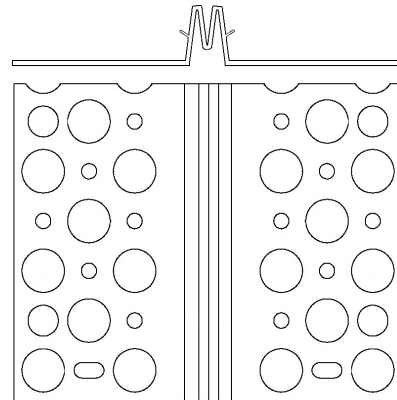
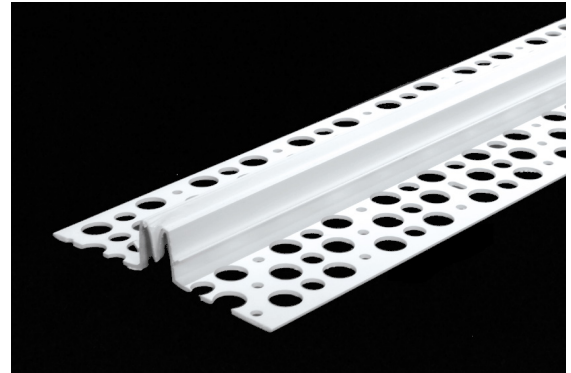
Meets IBC 2510 and IBC 2511

Refer to ASTM C1063 for support spacing, lath selection, fastener selection and further information regarding the proper installation of metal lath and accessories.

Meets Buy American Procurement Requirements

Made in the United States of America

LEED: 100% post industrial recyclable content



Vinyl M-Type Control Joint

Removable tape has been provided to insure a clean joint after stucco application. If joints are ordered without the removable tape, it is the contractor's responsibility to keep the joint clean of wet stucco and any other debris.

All butt joints, intersections, and ends should be joined, embedded and sealed in a quality sealant compatible with exterior paint finish.

All information contained herein is accurate as known at the time of publication. Specifications may change and AMICO reserves the right to change product specifications without notice and without incurring obligations.

ALABAMA METAL INDUSTRIES CORPORATION

3245 Fayette Avenue ♦ Birmingham, AL 35208 ♦ Telephone 800/366-2642

Facsimile 205/786-6527

VINYL CONTROL JOINT WITH REMOVABLE TAPE

FOR STUCCO AND PLASTER INSTALLATIONS

AMICO Vinyl Control Joint with optional removable tape is an improved version of the traditional "M" type joint. This design provides ground returns to better lock into the stucco.

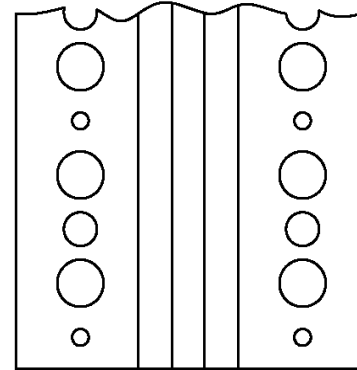
Product Submittal	Product Number	Ground Description
	AMCJX-250	1/4"
Each profile has an overall width of 3 1/4"		
Standard Length is 10-Feet		

FINISH

The finish on all AMICO vinyl stucco accessories is compatible with standard lathing and paint finishes.

REFERENCES

PVC complies with ASTM D4316 and ASTM D1784
 Meets IBC 2510 and IBC 2511
 Refer to ASTM C1063 for support spacing, lath selection, fastener selection and further information regarding the proper installation of metal lath and accessories.
 Meets Buy American Procurement Requirements
 Made in the United States of America
 LEED: 100% post industrial recyclable content



Vinyl Control Joint

Removable tape has been provided to insure a clean joint after stucco application. If joints are ordered without the removable tape, it is the contractor's responsibility to keep the joint clean of wet stucco and any other debris.

All butt joints, intersections, and ends should be joined, embedded and sealed in a quality sealant compatible with exterior paint finish.

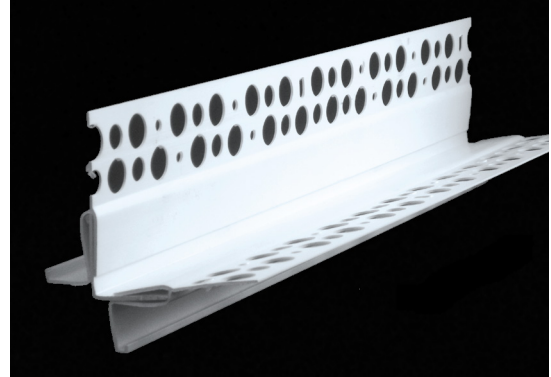
All information contained herein is accurate as known at the time of publication. Specifications may change and AMICO reserves the right to change product specifications without notice and without incurring obligations.

ALABAMA METAL INDUSTRIES CORPORATION
 3245 Fayette Avenue ♦ Birmingham, AL 35208 ♦ Telephone 800/366-2642
 Facsimile 205/786-6527

VINYL 3-PIECE OUTSIDE CORNER EXPANSION JOINT

FOR STUCCO AND PLASTER INSTALLATIONS

AMICO Vinyl 3-Piece Outside Corner Expansion Joint is specified to relieve stress in stucco at outside corners where excessive movement can result in cracking. This accessory is designed for both interior and exterior applications.



Vinyl 3-Piece Outside Corner Expansion Joint

Product Submittal	Product Number	Ground Description
	AMXJO-500	1/2"
	AMXJO-580	5/8"
	AMXJO-750	3/4"
	AMXJO-780	7/8"
3-Piece Construction		
Each Perforated Flange is 2-inches Long		
Standard Length is 10-Feet		

FINISH

The finish on all AMICO vinyl stucco accessories is compatible with standard lathing and paint finishes.

REFERENCES

PVC complies with ASTM D4316 and ASTM D1784

Meets IBC 2510 and IBC 2511

Refer to ASTM C1063 for support spacing, lath selection, fastener selection and further information regarding the proper installation of metal lath and accessories.

Meets Buy American Procurement Requirements

Made in the United States of America

LEED: 100% post industrial recyclable content

All butt joints, intersections, and ends should be joined, embedded and sealed in a quality sealant compatible with exterior paint finish.

All information contained herein is accurate as known at the time of publication. Specifications may change and AMICO reserves the right to change product specifications without notice and without incurring obligations.

ALABAMA METAL INDUSTRIES CORPORATION

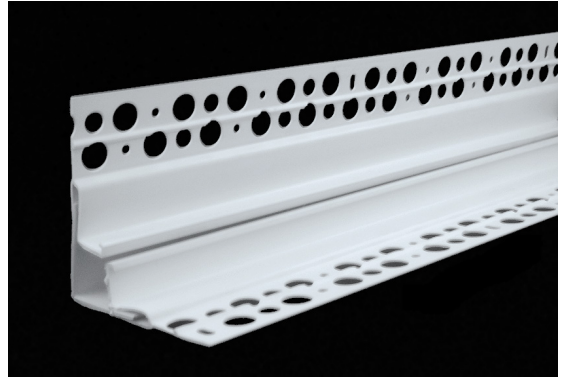
3245 Fayette Avenue ♦ Birmingham, AL 35208 ♦ Telephone 800/366-2642

Facsimile 205/786-6527

VINYL 3-PIECE INSIDE CORNER EXPANSION JOINT

FOR STUCCO AND PLASTER INSTALLATIONS

AMICO Vinyl 3-Piece Inside Corner Expansion Joint is specified to relieve stress in stucco at inside corners where excessive movement can result in cracking. This accessory is designed for both interior and exterior applications.



Vinyl 3-Piece Inside Corner Expansion Joint

Product Submittal	Product Number	Ground Description
	AMXJI-500	1/2"
	AMXJI-580	5/8"
	AMXJI-750	3/4"
	AMXJI-780	7/8"
3-Piece Construction		
Each Perforated Flange is 2-inches Long		
Standard Length is 10-Feet		

FINISH

The finish on all AMICO vinyl stucco accessories is compatible with standard lathing and paint finishes.

REFERENCES

PVC complies with ASTM D4316 and ASTM D1784

Meets IBC 2510 and IBC 2511

Refer to ASTM C1063 for support spacing, lath selection, fastener selection and further information regarding the proper installation of metal lath and accessories.

Meets Buy American Procurement Requirements

Made in the United States of America

LEED: 100% post industrial recyclable content

All butt joints, intersections, and ends should be joined, embedded and sealed in a quality sealant compatible with exterior paint finish.

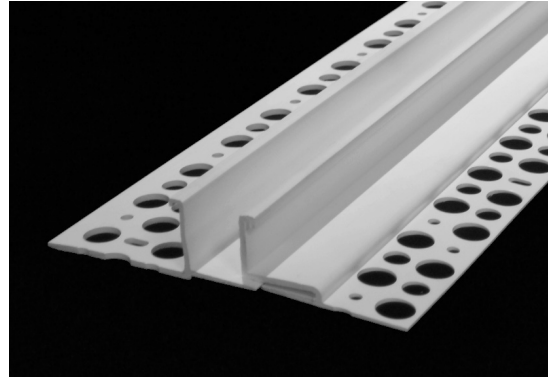
All information contained herein is accurate as known at the time of publication. Specifications may change and AMICO reserves the right to change product specifications without notice and without incurring obligations.

ALABAMA METAL INDUSTRIES CORPORATION
3245 Fayette Avenue ♦ Birmingham, AL 35208 ♦ Telephone 800/366-2642
Facsimile 205/786-6527

VINYL 2-PIECE EXPANSION JOINT with REVEAL

FOR STUCCO AND PLASTER INSTALLATIONS

AMICO Vinyl 2-Piece Expansion Joint with Reveal is specified to relieve stress in stucco wall and ceiling areas where a greater than normal degree of movement might occur. This joint allows for movement in two different planes and is recommended where two different framing materials meet at through wall construction joints.



Vinyl 2-Piece Expansion Joint with Reveal

Product Submittal	Product Number	Ground Description
	AMEJ-500-500	1/2"
	AMEJ-580-500	5/8"
	AMEJ-750-500	3/4"
	AMEJ-780-500	7/8"
Maximum Width of Reveal 1/2"		
Standard Length is 10-Feet		

FINISH

The finish on all AMICO vinyl stucco accessories is compatible with standard lathing and paint finishes.

REFERENCES

PVC complies with ASTM D4316 and ASTM D1784

Meets IBC 2510 and IBC 2511

Refer to ASTM C1063 for support spacing, lath selection, fastener selection and further information regarding the proper installation of metal lath and accessories.

Meets Buy American Procurement Requirements

Made in the United States of America

LEED: 100% post industrial recyclable content

All butt joints, intersections, and ends should be joined, embedded and sealed in a quality sealant compatible with exterior paint finish.

All information contained herein is accurate as known at the time of publication. Specifications may change and AMICO reserves the right to change product specifications without notice and without incurring obligations.

ALABAMA METAL INDUSTRIES CORPORATION

3245 Fayette Avenue ♦ Birmingham, AL 35208 ♦ Telephone 800/366-2642

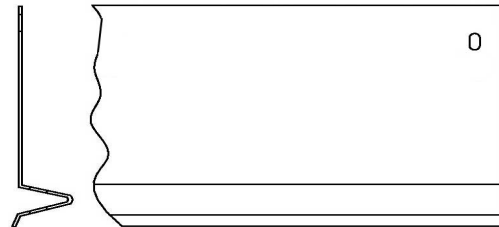
Facsimile 205/786-6527

VINYL FOUNDATION WEEP SCREED

FOR STUCCO AND PLASTER INSTALLATIONS

AMICO Vinyl Foundation Weep Screed provides a straight and true screed surface at the base of stucco walls while allowing moisture to escape the back of the stucco membrane.

Product Submittal	Product Number	Ground Description
	AMFWS-425-380	3/8"
	* AMFWS-425-500	1/2"
	* AMFWS-425-580	5/8"
	AMFWS-425-750	3/4"
	AMFWS-425-780	7/8"
Manufactured with a 3 1/2" Nailing Flange as Required by IBC 2510, 2511		
Overall Height of Weep Screed 4 1/4"		
Standard Length is 10-Feet		



Vinyl Foundation Weep Screed

FINISH

The finish on all AMICO vinyl stucco accessories is compatible with standard lathing and paint finishes.

* COLORS

Standard color is white. This profile can be specified and ordered with the exposed area in tan, brown or gray.



This bead is required by most building codes in the United States. Check with local building codes for the proper clearance for the weep screed placement above grade.

REFERENCES

PVC complies with ASTM D4316 and ASTM D1784
 Meets IBC 2510 and IBC 2511
 Refer to ASTM C1063 for support spacing, lath selection, fastener selection and further information regarding the proper installation of metal lath and accessories.
 Meets Buy American Procurement Requirements
 Made in the United States of America
 LEED: 100% post industrial recyclable content

All butt joints, intersections, and ends should be joined, embedded and sealed in a quality sealant compatible with exterior paint finish.

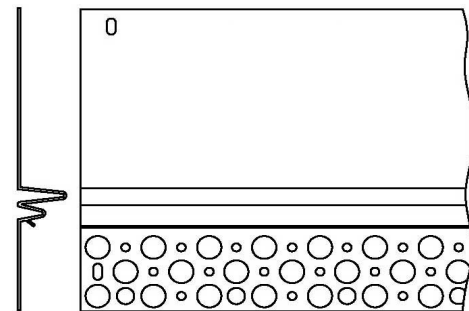
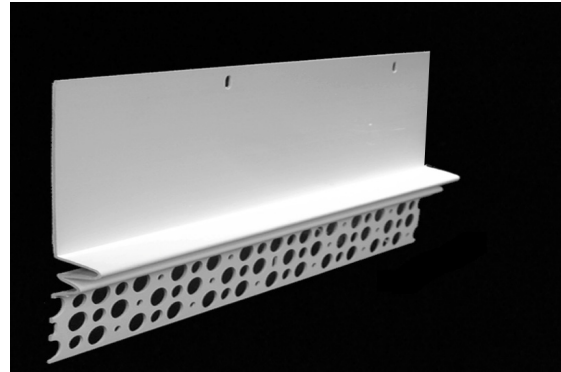
All information contained herein is accurate as known at the time of publication. Specifications may change and AMICO reserves the right to change product specifications without notice and without incurring obligations.

ALABAMA METAL INDUSTRIES CORPORATION
 3245 Fayette Avenue ♦ Birmingham, AL 35208 ♦ Telephone 800/366-2642
 Facsimile 205/786-6527

VINYL MID WALL WEEP SCREED

FOR STUCCO AND PLASTER INSTALLATIONS

AMICO Vinyl Mid Wall Weep Screed performs as an unpunched weep screed allowing excess moisture to escape the back of a stucco membrane. This screed also performs as an expansion (control) joint with twin grounds. It is installed where a framed stucco surface meets a masonry (concrete block) surface. This condition is common between floors on 2-story homes and at the base of a gable receiving stucco. The unpunched flange above must be installed extending at least one inch below the framing/concrete joint. The weather barrier and lath should be installed over the solid upper flange to direct water to the foundation weep screed.



Vinyl Mid Wall Weep Screed

Product Submittal	Product Number	Ground Description
	AMMWS-780-500	1/2"
	AMMWS-780-580	5/8"
Manufactured with a 3 1/2" Nailing Flange as Required by IBC 2510, 2511		
Standard Length is 10-Feet		

FINISH

The finish on all AMICO vinyl stucco accessories is compatible with standard lathing and paint finishes.

REFERENCES

PVC complies with ASTM D4316 and ASTM D1784

Meets IBC 2510 and IBC 2511

Refer to ASTM C1063 for support spacing, lath selection, fastener selection and further information regarding the proper installation of metal lath and accessories.

Meets Buy American Procurement Requirements

Made in the United States of America

LEED: 100% post industrial recyclable content

The unpunched flange above must be installed extending at least 1-inch below the framing / concrete joint. The weather barrier and lath should be installed over the solid upper flange to direct moisture to the foundation weep screed.

All butt joints, intersections, and ends should be joined, embedded and sealed in a quality sealant compatible with exterior paint finish.

All information contained herein is accurate as known at the time of publication. Specifications may change and AMICO reserves the right to change product specifications without notice and without incurring obligations.

ALABAMA METAL INDUSTRIES CORPORATION

3245 Fayette Avenue ♦ Birmingham, AL 35208 ♦ Telephone 800/366-2642

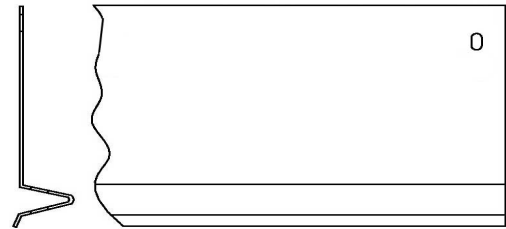
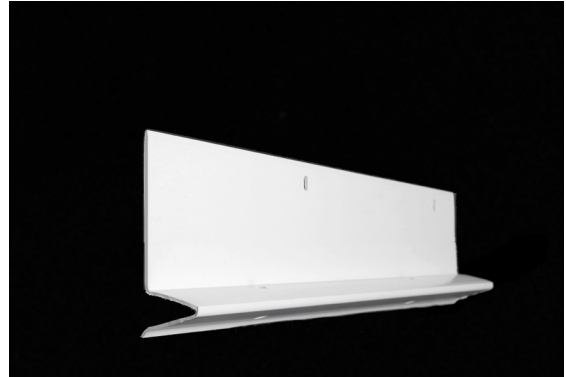
Facsimile 205/786-6527

VINYL ROOF / WALL SCREED

FOR STUCCO AND PLASTER INSTALLATIONS

AMICO Vinyl Transitional Weep Screed is made to provide drainage in areas other than at the foundation such as where stucco walls meet roof lines.

Product Submittal	Product Number	Ground Description
	AMRWS-P-238-380	3/8"
	AMRWS-P- 238-500	1/2"
	AMRWS-P-238-580	5/8"
	AMRWS-P-238-750	3/4"
	AMRWS-P- 238-780	7/8"
Manufactured with a 2 3/8" Nailing Flange		
Overall Height of Weep Screed 2 1/2"		
Standard Length is 10-Feet		



Vinyl Transitional Weep Screed

FINISH

The finish on all AMICO vinyl stucco accessories is compatible with standard lathing and paint finishes.

REFERENCES

- PVC complies with ASTM D4316 and ASTM D1784
- Meets IBC 2510 and IBC 2511
- Refer to ASTM C1063 for support spacing, lath selection, fastener selection and further information regarding the proper installation of metal lath and accessories.
- Meets Buy American Procurement Requirements
- Made in the United States of America
- LEED: 100% post industrial recyclable content

All butt joints, intersections, and ends should be joined, embedded and sealed in a quality sealant compatible with exterior paint finish.

All information contained herein is accurate as known at the time of publication. Specifications may change and AMICO reserves the right to change product specifications without notice and without incurring obligations.

ALABAMA METAL INDUSTRIES CORPORATION
3245 Fayette Avenue ♦ Birmingham, AL 35208 ♦ Telephone 800/366-2642
Facsimile 205/786-6527

VINYL CONTINUOUS INSULATION (CI) WEEP TRAC™

FOR STUCCO AND PLASTER INSTALLATIONS

AMICO Vinyl Transitional Weep Screed is made to provide drainage in areas other than at the foundation such as where stucco walls meet roof lines.

Product Submittal	Product Number	Ground Description
	AMCI-750	7/8"
	AMCI-P-750	7/8"
Manufactured with a 3 1/2" Nailing Flange		
Standard Length is 10-Feet		

FINISH

The finish on all AMICO vinyl stucco accessories is compatible with standard lathing and paint finishes.

REFERENCES

PVC complies with ASTM D4316 and ASTM D1784

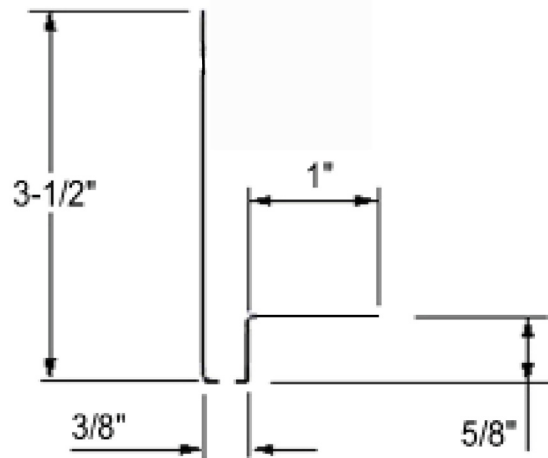
Meets IBC 2510 and IBC 2511

Refer to ASTM C1063 for support spacing, lath selection, fastener selection and further information regarding the proper installation of metal lath and accessories.

Meets Buy American Procurement Requirements

Made in the United States of America

LEED: 100% post industrial recyclable content



Vinyl CI Weep Trac™

All butt joints, intersections, and ends should be joined, embedded and sealed in a quality sealant compatible with exterior paint finish.

All information contained herein is accurate as known at the time of publication. Specifications may change and AMICO reserves the right to change product specifications without notice and without incurring obligations.

ALABAMA METAL INDUSTRIES CORPORATION

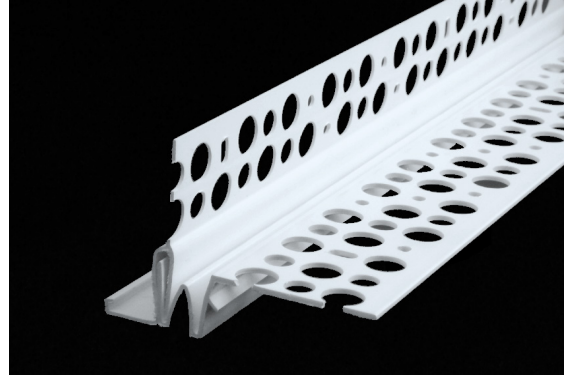
3245 Fayette Avenue ♦ Birmingham, AL 35208 ♦ Telephone 800/366-2642

Facsimile 205/786-6527

VINYL DRIP SCREED with CONTROL JOINT

FOR STUCCO AND PLASTER INSTALLATIONS

AMICO Vinyl Drip Screed with Control Joint has a 2-piece design which allows for a drip edge in stucco. The control joint helps to relieve stress at the joining point of soffit and fascia.



Vinyl Drip Screed with Control Joint

Product Submittal	Product Number	Ground Description
	AMDS-750-500	1/2"
	AMDS-750-750	3/4"
	AMDS-580-580	5/8"
Standard Length is 10-Feet		

FINISH

The finish on all AMICO vinyl stucco accessories is compatible with standard lathing and paint finishes.

REFERENCES

PVC complies with ASTM D4316 and ASTM D1784

Meets IBC 2510 and IBC 2511

Refer to ASTM C1063 for support spacing, lath selection, fastener selection and further information regarding the proper installation of metal lath and accessories.

Meets Buy American Procurement Requirements

Made in the United States of America

LEED: 100% post industrial recyclable content

All butt joints, intersections, and ends should be joined, embedded and sealed in a quality sealant compatible with exterior paint finish.

All information contained herein is accurate as known at the time of publication. Specifications may change and AMICO reserves the right to change product specifications without notice and without incurring obligations.

ALABAMA METAL INDUSTRIES CORPORATION

3245 Fayette Avenue ♦ Birmingham, AL 35208 ♦ Telephone 800/366-2642

Facsimile 205/786-6527

VINYL STUCCO REVEAL CONNECTORS AVAILABLE FOR ALL STUCCO REVEALS WITH CAPS

Patent #5,761,866

FOR STUCCO AND PLASTER INSTALLATIONS

AMICO Vinyl Stucco Connectors are a fabricated accessory to enable accurate junctures of AMICO Reveals. These connectors are fabricated from AMICO AMSR Stucco Reveals to meet the requirements for each project. They are available in all sizes, reveals and grounds.

FINISH

The finish on all AMICO vinyl stucco accessories is compatible with standard lathing and paint finishes.

All butt joints, intersections, and ends should be joined, embedded and sealed in a quality sealant compatible with exterior paint finish.

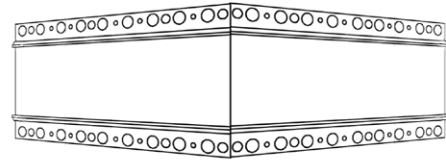
REFERENCES

PVC complies with ASTM D4316 and ASTM D1784
Meets IBC 2510 and IBC 2511

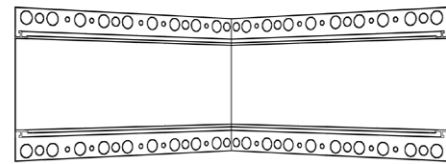
Refer to ASTM C1063 for support spacing, lath selection, fastener selection and further information regarding the proper installation of metal lath and accessories.

Meets Buy American Procurement Requirements
Made in the United States of America

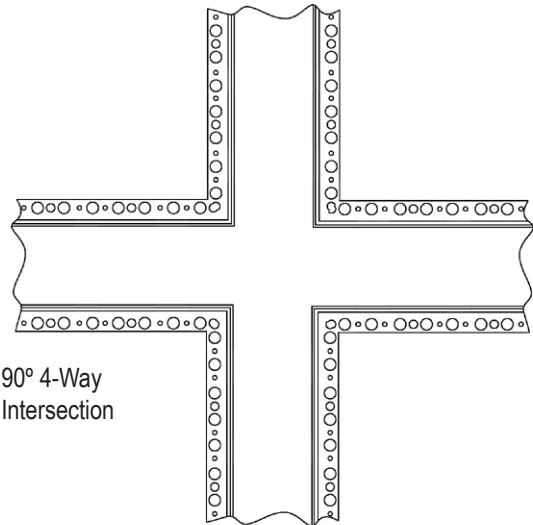
LEED: 100% post industrial recyclable content



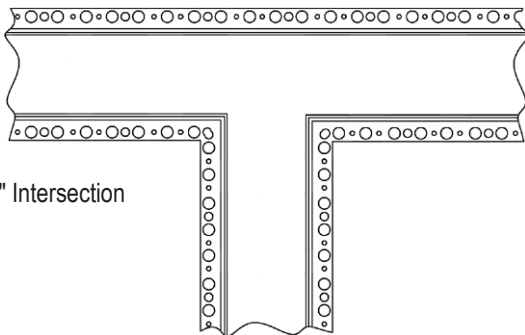
90° Outside Corner



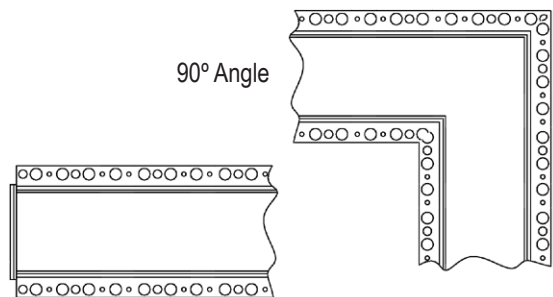
90° Inside Corner



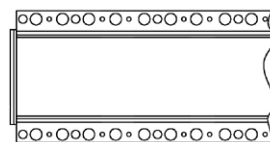
90° 4-Way
Intersection



90° "T" Intersection



90° Angle



End Closure

All information contained herein is accurate as known at the time of publication. Specifications may change and AMICO reserves the right to change product specifications without notice and without incurring obligations.

ALABAMA METAL INDUSTRIES CORPORATION

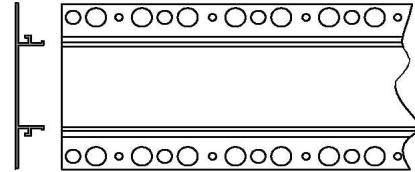
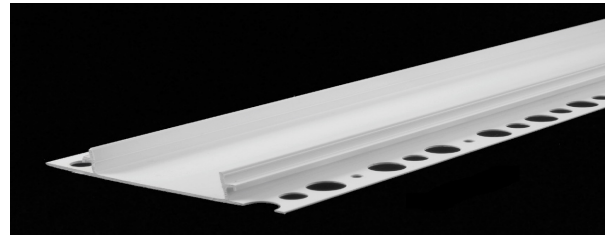
3245 Fayette Avenue ♦ Birmingham, AL 35208 ♦ Telephone 800/366-2642

Facsimile 205/786-6527

VINYL STUCCO REVEAL with REMOVABLE CAP

FOR STUCCO AND PLASTER INSTALLATIONS

AMICO Vinyl Stucco Reveal creates a distinctive break in the stucco surface. The temporary and removable masking cap protects the reveal from collecting debris during construction. Caps are not available for all sizes. Cap availability is noted in the table below. AMICO Intersections and Corners are designed to be used with this profile. Standard Length 10Ft.



Vinyl Stucco Reveal

Submittal	Product Number	Cap	Ground	Reveal
	AMSR-500-500	Yes	1/2"	1/2"
	AMSR-500-750	Yes	1/2"	3/4"
	AMSR-500-1000	Yes	1/2"	1"
	AMSR-500-1500	Yes	1/2"	1 1/2"
	AMSR-500-2000	Yes	1/2"	2"
	AMSR-500-3000	No	1/2"	3"
	AMSR-580-500	Yes	5/8"	1/2"
	AMSR-580-750	Yes	5/8"	3/4"
	AMSR-580-1000	Yes	5/8"	1"
	AMSR-580-1500	Yes	5/8"	1 1/2"
	AMSR-580-2000	Yes	5/8"	2"
	AMSR-580-3000	No	5/8"	3"
	AMSR-750-500	Yes	3/4"	1/2"
	AMSR-750-750	Yes	3/4"	3/4"
	AMSR-750-1000	Yes	3/4"	1"
	AMSR-750-1500	Yes	3/4"	1 1/2"
	AMSR-780-500	Yes	7/8"	1/2"
	AMSR-780-1500	Yes	7/8"	1 1/2"

FINISH

The finish on all AMICO vinyl stucco accessories is compatible with standard lathing and paint finishes.

REFERENCES

PVC complies with ASTM D4316 and ASTM D1784
Meets IBC 2510 and IBC 2511

Refer to ASTM C1063 for support spacing, lath selection, fastener selection and further information regarding the proper installation of metal lath and accessories.

Meets Buy American Procurement Requirements
Made in the United States of America

LEED: 100% post industrial recyclable content

All butt joints, intersections, and ends should be joined, embedded and sealed in a quality sealant compatible with exterior paint finish.

All information contained herein is accurate as known at the time of publication. Specifications may change and AMICO reserves the right to change product specifications without notice and without incurring obligations.

ALABAMA METAL INDUSTRIES CORPORATION

3245 Fayette Avenue ♦ Birmingham, AL 35208 ♦ Telephone 800/366-2642

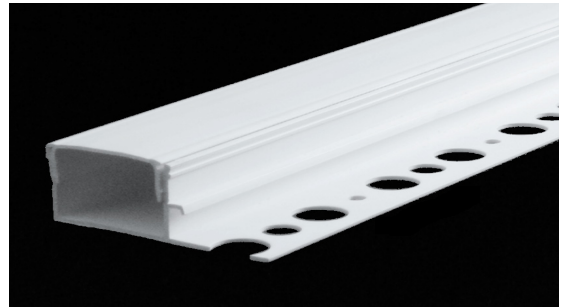
Facsimile 205/786-6527

VINYL "F" CHANNEL REVEAL

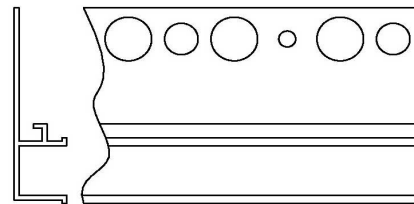
with REMOVABLE CAP

FOR STUCCO AND PLASTER INSTALLATIONS

AMICO Vinyl Stucco "F" Channel Reveal forms reveals in wall and ceiling designs, as well as addressing the juncture of dissimilar materials. The temporary and removable masking cap protects the reveal from collecting debris during construction. Cap not provided for all sizes.



Reveal shown with temporary and removable cap



Vinyl "F" Channel Reveal

Submittal	Product Number	Cap	Ground	Reveal
	AMFR-500-500	Yes	1/2"	1/2"
	AMFR-500-750	Yes	1/2"	3/4"
	AMFR-500-1000	Yes	1/2"	1"
	AMFR-500-1500	Yes	1/2"	1 1/2"
	AMFR-500-2000	Yes	1/2"	2"
	AMFR-580-500	Yes	5/8"	1/2"
	AMFR-580-750	Yes	5/8"	3/4"
	AMFR-580-1000	Yes	5/8"	1"
	AMFR-580-1500	Yes	5/8"	1 1/2"
	AMFR-580-2000	Yes	5/8"	2"
	AMFR-750-500	Yes	3/4"	1/2"
	AMFR-750-750	Yes	3/4"	3/4"
	AMFR-750-1000	Yes	3/4"	1"
	AMFR-750-1500	Yes	3/4"	1 1/2"
	AMFR-750-2000	Yes	3/4"	2"
	AMFR-780-500	Yes	7/8"	1/2"
	AMFR-780-1500	Yes	7/8"	1 1/2"

FINISH

The finish on all AMICO vinyl stucco accessories is compatible with standard lathing and paint finishes.

REFERENCES

PVC complies with ASTM D4316 and ASTM D1784
Meets IBC 2510 and IBC 2511

Refer to ASTM C1063 for support spacing, lath selection, fastener selection and further information regarding the proper installation of metal lath and accessories.

Meets Buy American Procurement Requirements
Made in the United States of America

LEED: 100% post industrial recyclable content

All butt joints, intersections, and ends should be joined, embedded and sealed in a quality sealant compatible with exterior paint finish.

All information contained herein is accurate as known at the time of publication. Specifications may change and AMICO reserves the right to change product specifications without notice and without incurring obligations.

ALABAMA METAL INDUSTRIES CORPORATION

3245 Fayette Avenue ♦ Birmingham, AL 35208 ♦ Telephone 800/366-2642

Facsimile 205/786-6527

VINYL ANGLED STUCCO REVEAL

Patent # D456,528S

FOR STUCCO AND PLASTER INSTALLATIONS

AMICO Vinyl Angled Stucco Reveal creates a unique architectural break in the surface area of a stucco wall or ceiling.

Submittal	Product Number	Ground	Reveal Width
	AMSRA-580	5/8"	1 5/8"
	AMSRA-750	3/4"	1 5/8"
Overall Width of Perforated Flange is 3"			
Standard Length is 10-Feet			

FINISH

The finish on all AMICO vinyl stucco accessories is compatible with standard lathing and paint finishes.

REFERENCES

PVC complies with ASTM D4316 and ASTM D1784

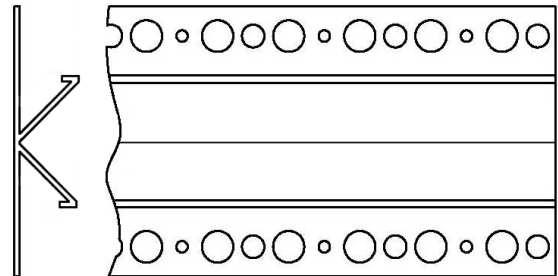
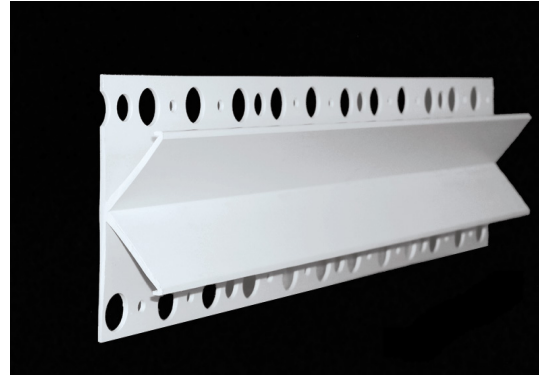
Meets IBC 2510 and IBC 2511

Refer to ASTM C1063 for support spacing, lath selection, fastener selection and further information regarding the proper installation of metal lath and accessories.

Meets Buy American Procurement Requirements

Made in the United States of America

LEED: 100% post industrial recyclable content



Vinyl Angled Stucco Reveal

The reveal does not perform the function of an expansion / control joint since the bead does not allow any movement.

To function properly, the stucco finish should be forced up under the lip of the bead.

All butt joints, intersections, and ends should be joined, embedded and sealed in a quality sealant compatible with exterior paint finish.

All information contained herein is accurate as known at the time of publication. Specifications may change and AMICO reserves the right to change product specifications without notice and without incurring obligations.

ALABAMA METAL INDUSTRIES CORPORATION

3245 Fayette Avenue ♦ Birmingham, AL 35208 ♦ Telephone 800/366-2642

Facsimile 205/786-6527

VINYL 2-PIECE SHADOW REVEAL

FOR STUCCO AND PLASTER INSTALLATIONS

AMICO Vinyl Stucco 2-Piece Shadow Reveal is specified for multiple reasons. The bead forms a reveal 1/2-inch to 1-1/4 inch wide while its 2-piece construction allows for movement at the juncture of the horizontal and vertical stucco surface.



Vinyl 2-Piece Shadow Reveal

Submittal	Product Number	Vertical Leg	Ground
_____	AMESR-380-500	3/4"	3/8"
_____	AMESR-500-500	3/4"	1/2"
_____	AMESR-580-500	3/4"	5/8"
_____	AMESR-750-500	3/4"	3/4"
_____	AMESR-780-500	3/4"	7/8"
_____	AMESR-380-500	1"	3/8"
_____	AMESR-500-500	1"	1/2"
_____	AMESR-580-500	1"	5/8"
_____	AMESR-750-500	1"	3/4"
_____	AMESR-780-500	1"	7/8"
_____	AMESR-380-500	1 1/2"	3/8"
_____	AMESR-380-500	1 1/2"	1/2"
_____	AMESR-380-500	1 1/2"	5/8"
_____	AMESR-380-500	1 1/2"	3/4"
_____	AMESR-380-500	1 1/2"	7/8"
Standard Length is 10-Foot			

REFERENCES

PVC complies with ASTM D4316 and ASTM D1784
 Meets IBC 2510 and IBC 2511
 Refer to ASTM C1063 for support spacing, lath selection, fastener selection and further information regarding the proper installation of metal lath and accessories.
 Meets Buy American Procurement Requirements
 Made in the United States of America
 LEED: 100% post industrial recyclable content

FINISH

The finish on all AMICO vinyl stucco accessories is compatible with standard lathing and paint finishes.

All butt joints, intersections, and ends should be joined, embedded and sealed in a quality sealant compatible with exterior paint finish.

All information contained herein is accurate as known at the time of publication. Specifications may change and AMICO reserves the right to change product specifications without notice and without incurring obligations.

ALABAMA METAL INDUSTRIES CORPORATION

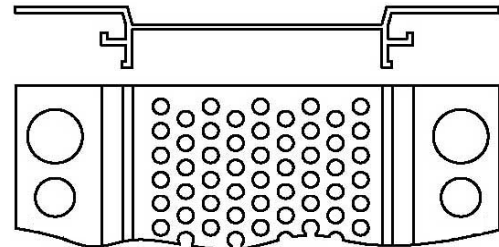
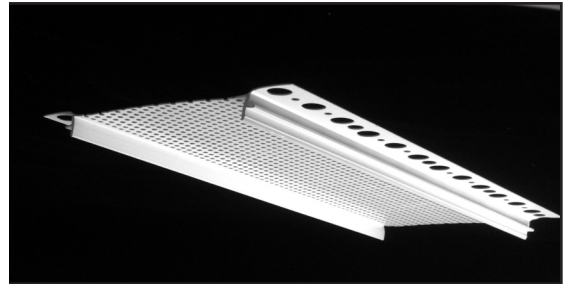
3245 Fayette Avenue ♦ Birmingham, AL 35208 ♦ Telephone 800/366-2642
 Facsimile 205/786-6527



VINYL CONTINUOUS STUCCO SOFFIT VENT with H-CLIPS

FOR STUCCO AND PLASTER INSTALLATIONS

AMICO Vinyl Continuous Stucco Soffit Vent is a 1-piece bead for ventilating soffit areas. The design of the bead has incorporated the function of a casing bead to provide a necessary ground for proper stucco application.



Vinyl Continuous Soffit Vent

Submittal	Product Number	Vent Width	Ground
	AMSVS-200-500	2"	1/2"
	AMSVS-200-580	2"	5/8"
	AMSVS-200-750	2"	3/4"
	AMSVS-200-780	2"	7/8"
6.6 Square Inches of Vent Open Area per Lineal Foot with an Overall Width of 3 3/4"			
	AMSVS-300-500	3"	1/2"
	AMSVS-300-580	3"	5/8"
	AMSVS-300-750	3"	3/4"
	AMSVS-300-780	3"	7/8"
9.6 Square Inches of Vent Open Area per Lineal Foot with an Overall Width of 4 3/4"			
	AMSVS-400-500	4"	1/2"
	AMSVS-400-580	4"	5/8"
	AMSVS-400-750	4"	3/4"
	AMSVS-400-780	4"	7/8"
14.0 Square Inches of Vent Open Area per Lineal Foot with an Overall Width of 5 3/4"			
Standard Length is 10-Feet			

FINISH

The finish on all AMICO vinyl stucco accessories is compatible with standard lathing and paint finishes.

All butt joints, intersections, and ends should be joined, embedded and sealed in a quality sealant compatible with exterior paint finish.

AMICO H-CLIPS are supplied with all vinyl stucco vent products. They assure stability between the end joints of the vented surface. They are provided in 2-inch, 3-inch and 4-inch lengths to correspond to the vent width of the profile. H-Clips are supplied upon request. Contact our Lakeland, Florida branch, 800-487-2511 to order.



REFERENCES

PVC complies with ASTM D4316 and ASTM D1784

Meets IBC 2510 and IBC 2511

Refer to ASTM C1063 for support spacing, lath selection, fastener selection and further information regarding the proper installation of metal lath and accessories.

Meets Buy American Procurement Requirements

Made in the United States of America

LEED: 100% post industrial recyclable content

All information contained herein is accurate as known at the time of publication. Specifications may change and AMICO reserves the right to change product specifications without notice and without incurring obligations.

ALABAMA METAL INDUSTRIES CORPORATION

3245 Fayette Avenue ♦ Birmingham, AL 35208 ♦ Telephone 800/366-2642

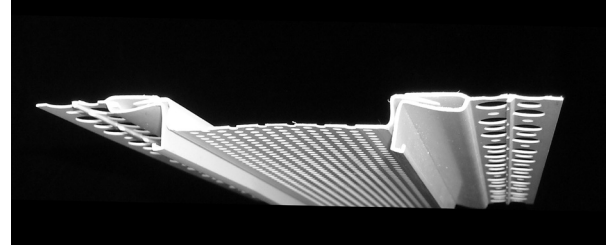
Facsimile 205/786-6527

VINYL STUCCO SOFFIT VENT 3-PIECE CONSTRUCTION with H-CLIPS

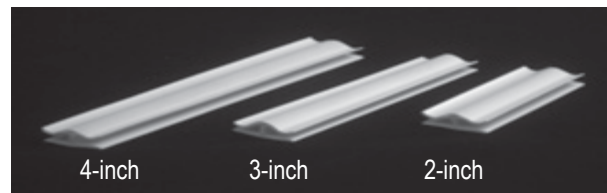
FOR STUCCO AND PLASTER INSTALLATIONS

AMICO Vinyl Stucco Soffit Vent is a 3-piece bead for ventilating attic areas through the soffit. The 3-piece design also allows for expansion and contraction in the soffit. The two outside casing type components provide grounds that match the thickness of the stucco and can be used as the screed. Standard Length is 10-Feet

Submittal	Product Number	Vent Width	Ground
	AMSV-750-100	1"	3/4"
6.6 Square Inches of Vent Open Area per Lineal Foot with an Overall Width of 5 1/8 inch			
	AMSV-380-200	2"	3/8"
	AMSV-500-200	2"	1/2"
	AMSV-580-200	2"	5/8"
	AMSV-750-200	2"	3/4"
	AMSV-780-200	2"	7/8"
6.6 Square Inches of Vent Open Area per Lineal Foot with an Overall Width of 6 1/8 inch			
	AMSV-380-300	3"	3/8"
	AMSV-580-300	3"	5/8"
	AMSV-750-300	3"	3/4"
	AMSV-780-300	3"	7/8"
9.6 Square Inches of Vent Open Area per Lineal Foot with an Overall Width of 7 1/8 inch			
	AMSV-380-400	4"	3/8"
	AMSV-500-400	4"	1/2"
	AMSV-580-400	4"	5/8"
	AMSV-750-400	4"	3/4"
	AMSV-780-400	4"	7/8"
14.0 Square Inches of Vent Open Area per Lineal Foot with an Overall Width of 8 1/8"			



AMICO H-CLIPS are supplied with all vinyl stucco vent products. They assure stability between the end joints of the vented surface. They are provided in 2-inch, 3-inch and 4-inch lengths to correspond to the vent width of the profile. H-Clips are supplied upon request. Contact our Lakeland, Florida branch, 800-487-2511 to order.



FINISH

The finish on all AMICO vinyl stucco accessories is compatible with standard lathing and paint finishes.

REFERENCES

PVC complies with ASTM D4316 and ASTM D1784
 Meets IBC 2510 and IBC 2511
 Refer to ASTM C1063 for support spacing, lath selection, fastener selection and further information regarding the proper installation of metal lath and accessories.
 Meets Buy American Procurement Requirements
 Made in the United States of America
 LEED: 100% post industrial recyclable content

All butt joints, intersections, and ends should be joined, embedded and sealed in a quality sealant compatible with exterior paint finish.

All information contained herein is accurate as known at the time of publication. Specifications may change and AMICO reserves the right to change product specifications without notice and without incurring obligations.

ALABAMA METAL INDUSTRIES CORPORATION

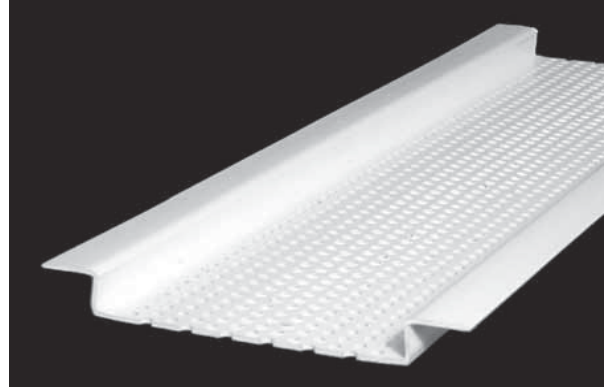
3245 Fayette Avenue ♦ Birmingham, AL 35208 ♦ Telephone 800/366-2642
 Facsimile 205/786-6527



VINYL STUCCO SOFFIT VENT INSERTS

FOR STUCCO INSTALLATIONS

Provide continuous attic ventilation through the perforated surface. Shoulders are a full 3/8" deep to protect sheathing edges and to provide a caulking surface. These vents are often installed directly to the bottom of the joist prior to the installation of the sheathing. This provides for continuous air flow along the entire length of the soffit.



Submittal	Product Number	Vent open area (per lineal ft)	Vent Width "A"	Leg Width "B"	Width "C"
	AMSVI-200	9.2 sq. in.	2"	5/8"	3 1/4"
	AMSVI-300	14.0 sq. in.	3"	5/8"	4 1/4"
	AMSVI-400	18.6 sq. in.	4"	7/8"	5 1/4"
For Use With 3/8"-inch Thick Board					
Standard Length is 10-ft.					

FINISH

The finish on all AMICO vinyl stucco accessories is compatible with standard lathing and paint finishes.

REFERENCES

PVC complies with ASTM D4316 and ASTM D1784
 Meets IBC 2510 and IBC 2511
 Refer to ASTM C1063 for support spacing, lath selection, fastener selection and further information regarding the proper installation of metal lath and accessories.
 Meets Buy American Procurement Requirements
 Made in the United States of America
 LEED: 100% post industrial recyclable content

All butt joints, intersections, and ends should be joined, embedded and sealed in a quality sealant compatible with exterior paint finish.

All information contained herein is accurate as known at the time of publication. Specifications may change and AMICO reserves the right to change product specifications without notice and without incurring obligations.

ALABAMA METAL INDUSTRIES CORPORATION
 3245 Fayette Avenue ♦ Birmingham, AL 35208 ♦ Telephone 800/366-2642
 Facsimile 205/786-6527

VINYL STUCCO SHADOW VENT SOFFIT PANELS with H-CLIPS

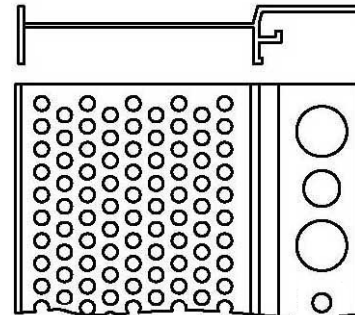
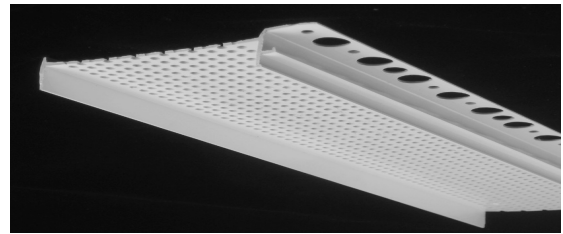
FOR STUCCO AND PLASTER INSTALLATIONS
AMICO Vinyl Stucco Shadow Vent Soffit Panels provide is a 1-piece 24-inch long vent panel unit with reveal for ventilation in the soffit.

Submittal	Product Number	Ground	Width of Panel
	AMSVSR-200-500	1/2"	2"
	AMSVSR-200-580	5/8"	2"
	AMSVSR-200-750	3/4"	2"
	AMSVSR-200-780	7/8"	2"
6.6 Square Inches of Vent Open Area per Lineal Foot			
	AMSVSR-300-500	1/2"	3"
	AMSVSR-300-580	5/8"	3"
	AMSVSR-300-750	3/4"	3"
	AMSVSR-300-780	7/8"	3"
9.6 Square Inches of Vent Open Area per Lineal Foot			
	AMSVSR-400-380	3/8"	4"
	AMSVSR-400-500	1/2"	4"
	AMSVSR-400-580	5/8"	4"
	AMSVSR-400-750	3/4"	4"
	AMSVSR-400-780	7/8"	4"
14.0 Square Inches of Vent Open Area per Lineal Foot			
Shadow Vent Panels are 24-Inches Long			

FINISH

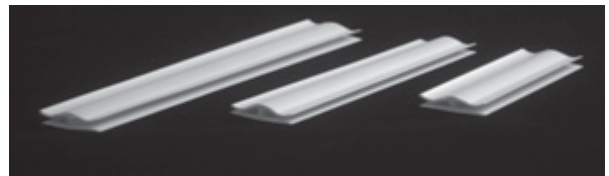
The finish on all AMICO vinyl stucco accessories is compatible with standard lathing and paint finishes.

All butt joints, intersections, and ends should be joined, embedded and sealed in a quality sealant compatible with exterior paint finish.



Vinyl Shadow Soffit Panels

AMICO H-CLIPS are supplied with all vinyl stucco vent products. They assure stability between the end joints of the vented surface. They are provided in 2-inch, 3-inch and 4-inch lengths to correspond to the vent width of the profile. H-Clips are supplied upon request. Contact our Lakeland, Florida branch, 800-487-2511 to order.



REFERENCES

PVC complies with ASTM D4316 and ASTM D1784
Meets IBC 2510 and IBC 2511
Refer to ASTM C1063 for support spacing, lath selection, fastener selection and further information regarding the proper installation of metal lath and accessories.
Meets Buy American Procurement Requirements
Made in the United States of America
LEED: 100% post industrial recyclable content

All information contained herein is accurate as known at the time of publication. Specifications may change and AMICO reserves the right to change product specifications without notice and without incurring obligations.

ALABAMA METAL INDUSTRIES CORPORATION

3245 Fayette Avenue ♦ Birmingham, AL 35208 ♦ Telephone 800/366-2642
Facsimile 205/786-6527

VINYL STUCCO ANGLES

FOR STUCCO AND PLASTER INSTALLATIONS

AMICO Vinyl Stucco Angles are used with inside and outside corner expansion joints or can be utilized for special applications.

DESCRIPTION

Submittal	Product Number	Dimension of Legs
	AM1000-1000	1" x 1"
	AM1500-1500	1½" x 1½"
Standard Length is 10-Feet		

FINISH

The finish on all AMICO vinyl stucco accessories is compatible with standard lathing and paint finishes.

REFERENCES

PVC complies with ASTM D4316 and ASTM D1784

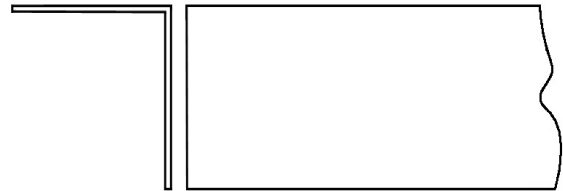
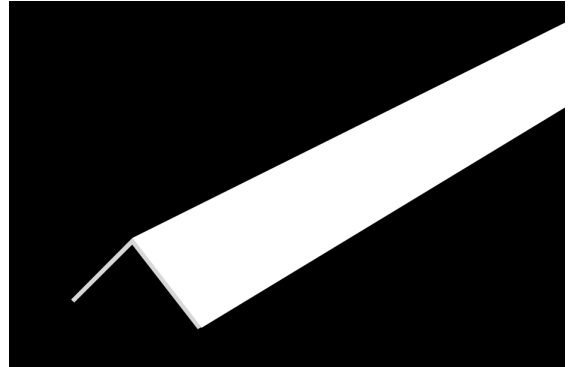
Meets IBC 2510 and IBC 2511

Refer to ASTM C1063 for support spacing, lath selection, fastener selection and further information regarding the proper installation of metal lath and accessories.

Meets Buy American Procurement Requirements

Made in the United States of America

LEED: 100% post industrial recyclable content



Vinyl Stucco Angles

All butt joints, intersections, and ends should be joined, embedded and sealed in a quality sealant compatible with exterior paint finish.

All information contained herein is accurate as known at the time of publication. Specifications may change and AMICO reserves the right to change product specifications without notice and without incurring obligations.

ALABAMA METAL INDUSTRIES CORPORATION

3245 Fayette Avenue ♦ Birmingham, AL 35208 ♦ Telephone 800/366-2642

Facsimile 205/786-6527

DRYWALL VINYL SOFFIT VENT INSERTS

Provide continuous attic ventilation through the perforated surface. Shoulders are a full 3/8" deep to protect sheathing edges and to provide a caulking surface. This product is often installed directly to the bottom of the joist prior to the installation of the sheathing. This provides a continuous airflow along the entire length of the soffit.



Drywall Vinyl Soffit Vent Inserts

Product Submittal	Product Number	Vent Width	Open Area per Lineal Ft.
	AMSVI-200	2"	9.2 sq. in.
	AMSVI-300	3"	14.0 sq. in.
	AMSVI-400	4"	18.6 sq. in.
For Use With 3/8"-inch Thick Board			
Standard Length is 10-ft.			

FINISH

The finish on all AMICO vinyl drywall accessories is compatible with standard drywall and paint finishes. Standard Color is white.

REFERENCES

PVC complies with ASTM D4316 and ASTM D1784
Meets IBC 2510 and IBC 2511
Refer to ASTM C1074 for trim selection, fastener selections and further information regarding the proper installation of metal lath and accessories.
Meets Buy American Procurement Requirements
Made in the United States of America
LEED: 100% post industrial recyclable content

All information contained herein is accurate as known at the time of publication. Specifications may change and AMICO reserves the right to change product specifications without notice and without incurring obligations.

ALABAMA METAL INDUSTRIES CORPORATION

3245 Fayette Avenue ♦ Birmingham, AL 35208 ♦ Telephone 800/366-2642
Facsimile 205/786-6527